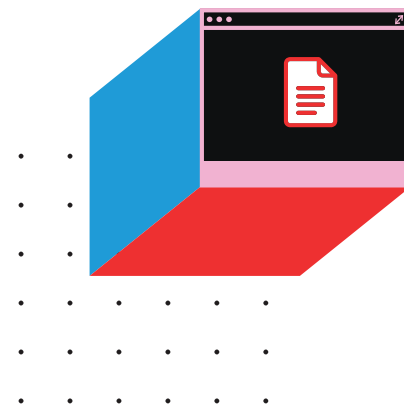


# JANET FORUM 2022 PROGRAMME

Universities in a Post COVID-19 World: Challenges and Opportunities



**Date:** Thursday, 24 November, 2022 – Friday, 25 November, 2022

**Host:** Chiba University

**In-Person Venue:** The Westin Grand, Berlin

(Address: Friedrichstraße 158-164, Berlin, Germany, 10117)

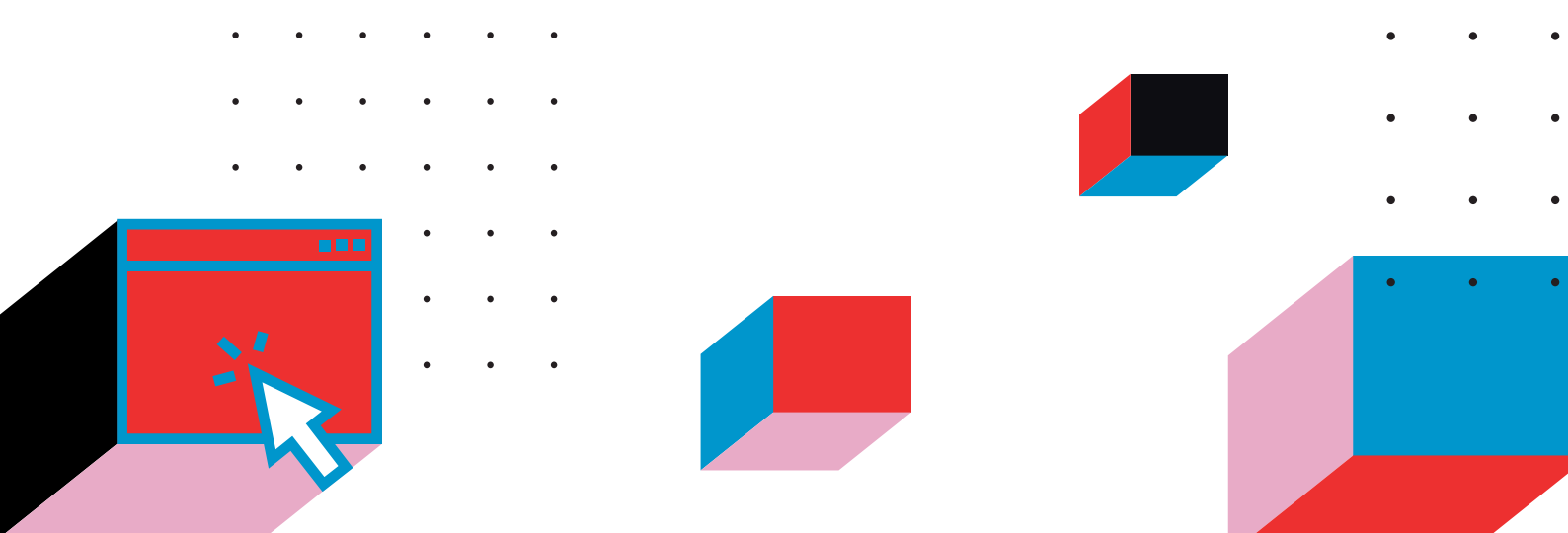
**Virtual Venue:** Day 1: Zoom webinar – Day 2: Zoom meeting

**Language:** Day 1: Japanese-English (Simultaneous Interpretation will be provided) – Day 2: English

## **DAY 1** Thursday, 24 November (Hybrid)

Time (JST / CET)	Programme
16:30 - 17:00 / 8:30 - 9:00 (30min.)	<b>Registration</b>
17:00 - 17:25 / 9:00 - 9:25 (25min.)	<b>Opening Ceremony</b>  <b>Opening remarks</b> 1. Prof. NAKAYAMA Toshinori, President, Chiba University 2. Prof. Axel Radlach Pries, Dean, Charité - Universitätsmedizin Berlin 3. H. E. Mr. YANAGI Hidenao, Ambassador of Japan to Germany, Embassy of Japan in Berlin
17:25 - 18:40 / 9:25 - 10:40 (1h15min.)	<b>Session Part I: Response to the Pandemic under the COVID-19 at European and Japanese Universities</b>  Lectures (20 min. x 3 speakers)  <b>1. Import of Modern Medicine from Germany to Japan and Town Planning based on Public Health</b> / Prof. MORI Chisato Director of the Centre for Preventive Medical Sciences, Chiba University <b>2. Our mission to minimize disaster-related health hazard in Japan, the notorious disaster-prone country</b> / Prof. MIKI Takashi Director of the Research Institute of Disaster Medicine, Chiba University <b>3. COVID-19 Response at Charité and beyond – inter-hospital ICU network</b> <b>PD Dr. Joachim Seybold</b> / Deputy Medical Director, Charité-Universitätsmedizin Berlin  Question and Answer Session (10 min.)

Time (JST / CET)	Programme
18:40 - 19:00 / 10:40 - 11:00 (20min.)	<b>Coffee break</b>
19:00 - 19:50 / 11:00 - 11:50 (50min.)	<b>Session Part II: Virtual Internationalization in higher education during and after the COVID-19 pandemic</b>  <b>Lectures (20 min. x 2 speakers)</b>  <b>1. Strategies for Virtual Internationalization by German Universities</b> Dr. Holger Finken Head of Section, Research Fellowship Programmes, German Academic Exchange Service (DAAD)  <b>2. Education Post-Pandemic: Building Globally Connected, Social and Innovative Learning Environment for All Students</b> Prof. IKEDA Keiko Vice Director, Institute for Innovative Global Education, Kansai University  Question and Answer Session (10min.)
19:50 - 20:00 / 11:50 - 12:00 (10min.)	<b>Closing remarks on Day 1</b>  Prof. WATANABE Makoto, Executive Vice President for Education, Student and International Affairs, Chiba University
20:30 - / 12:30 -	<b>Lunch</b> (In-person participants only)



Time (JST / CET)	Programme
16:30 - 17:00 / 8:30 - 9:00 (30min.)	<b>Registration</b>
17:00 - 17:05 / 9:00 - 9:05 (5min.)	<b>Opening Remarks on Day 2</b>  Prof. SATO Yukihiro, Vice President for Education, Student and International Affairs, Chiba University
17:05 - 17:40 / 9:05 - 9:40 (35min.)	<b>Session Part III: Virtual Networking between universities in Europe and Japan</b>  <b>Part 1</b>  - Education and research exchange between universities in Europe and Japan. - Individual meeting in Zoom breakout rooms for participating universities to get connected with each other directly.
17:40 - 17:50 / 9:40 - 9:50 (10min.)	<b>Break</b>
17:50 - 18:20 / 9:50 - 10:20 (30min.)	<b>Session Part III: Virtual Networking between universities in Europe and Japan</b>  <b>Part 2</b>  - Education and research exchange between universities in Europe and Japan. - Individual meeting in Zoom breakout rooms for participating universities to get connected with each other directly.
18:20 - 18:30 / 10:20 - 10:30 (10min.)	<b>Closing</b>  <b>Closing remarks</b> Prof. Dr. HAYASHI Masahiko, Director, JSPS Bonn Office

