

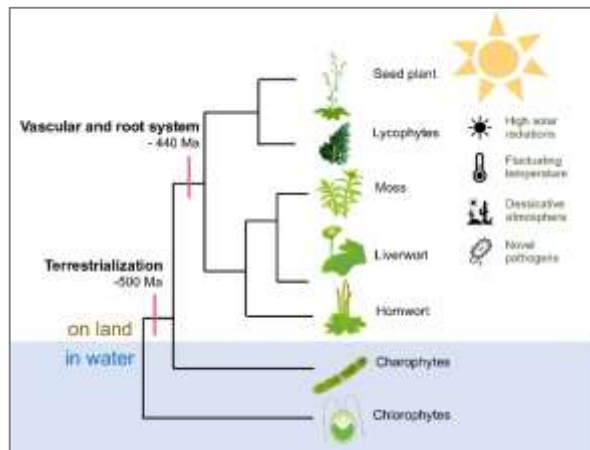


CONFÉRENCE

Dr Kanade TATSUMI

Institut de biologie moléculaires des plantes (IBMP) CNRS-Université de Strasbourg

«How did pioneer plants transition from water to land 500 million years ago? »



INSCRIPTION OBLIGATOIRE: mujapon@unistra.fr

Land colonization by plants 5 million years ago was one of the most important evolutionary events for terraformation. Through photosynthetic activity, early land plants critically contributed to the rise of atmospheric oxygen, CO₂ decrease, and the development of soils. Plant settlements on land, therefore, paved the way for the development of complex terrestrial ecosystems and the emergence of new life forms. As Pioneer plants from water were exposed to new challenges, including UV radiations, drought, lack of buoyancy, and fluctuating temperatures on land, they acquired new metabolites to adapt to the land environment. We are studying how plants evolved from water to land, focusing on apoplastic barriers, which are the critical acquisition of land plants.

-- **Conférence tout public – en anglais--**

Mardi 30 janvier 2024 à 17h30

Maison Universitaire France-Japon

42a, Avenue de la Forêt Noire à Strasbourg