



# JSPS



## RESEARCH IN JAPAN

Funding Opportunities

for Foreign Researchers

*2025 - 2026*

# Contents

1. <b>About JSPS (Japan Society for the Promotion of Science)</b> .....	2
2. <b>Funding Opportunities</b> .....	4
3. <b>International Fellowships for Individual Researchers</b> .....	6
Summer Program .....	8
Postdoctoral Fellowship (Short-term) .....	10
Postdoctoral Fellowship (Standard) .....	12
Invitational Fellowship (Long-term) .....	18
Invitational Fellowship (Short-term) .....	20
4. <b>Bilateral Programs</b> .....	22
Bilateral Joint Research Projects/Seminars .....	23
Open Partnership Joint Research Projects/Seminars.....	25
5. <b>Other Programs</b> .....	26
JSPS Core-to-Core Program: Advanced Research Networks .....	26
ORA (Open Research Area for the Social Sciences) Program.....	27
Frontiers of Science (FoS) Symposium .....	28
6. <b>Receiving Japanese Researchers in France/Italy</b> .....	29
Overseas Research Fellowships.....	29
7. <b>Contact Information</b> .....	30

## 1. About JSPS (Japan Society for the Promotion of Science)

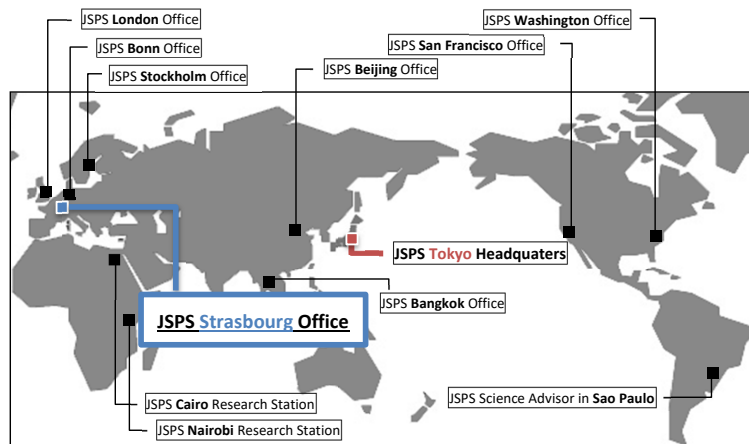
### What is JSPS?

- Research funding agency, covering all academic fields (Humanities, Social Sciences, Natural and Applied Sciences)
- Founded in 1932 through an endowment of the Emperor Showa
- Independent administrative institution since October 2003
- Under the umbrella of the Ministry of Education, Culture, Sports, Science and Technology (MEXT)
- Supported by Japanese government
- Budget for every year: About 1.8 billion € (Converted at 1 Euro 160 yen)

### Major Functions of JSPS

- To foster young researchers
- To promote international scientific cooperation
- To award Grands-in-Aid for Scientific Research
- To support scientific cooperation between the academic community and industry
- To collect and distribute information on scientific research activities

### JSPS Overseas Offices



### Mission of JSPS Strasbourg Office

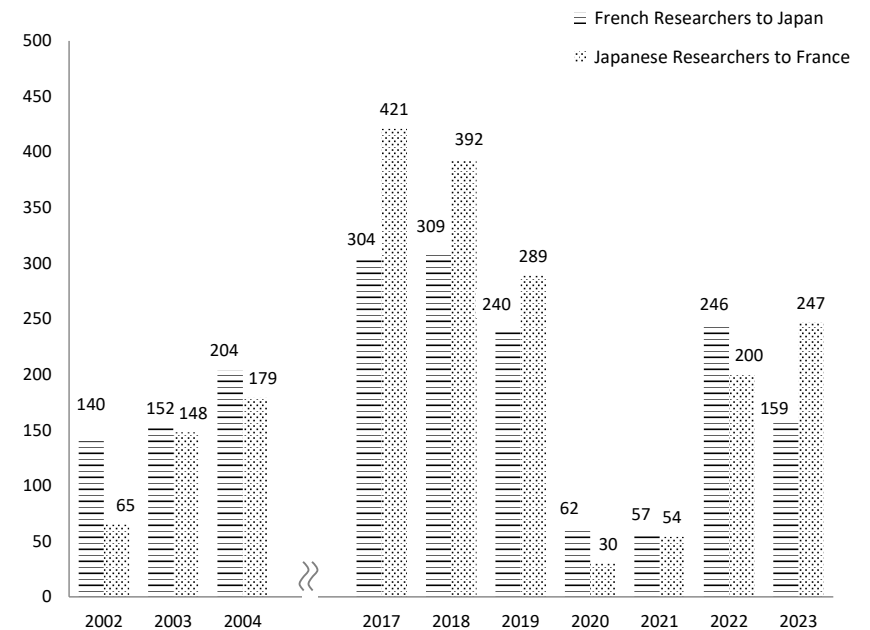
- To promote research exchanges between South European\* and Japanese researchers
- To provide information and assistance for academic exchanges between South European\* and Japan
- To be a reliable partner of CNRS, Inserm, MEAE, MESR, Inria, ANR, CNR, MUR, other research institutions, South European universities, « Grandes Ecoles », as well as « Maison Universitaire France - Japon »
- To organize scientific symposia such as JSPS Forums, workshops and academic seminars in South European countries\*



JSPS Strasbourg Office in the Maison Universitaire France - Japon since 2001

\* France, French speaking regions in Europe and Greece, Italy, Portugal and Spain

### Number of Researchers Exchanged through JSPS Programs in the case of France



## 2. Funding Opportunities

JSPS carries out programs that provide excellent researchers from other countries an opportunity to conduct collaborative research, discussions, and opinion exchanges with researchers in Japan.

Various programs are tailored to the visitors' career stage and the purpose of their visit, and multiple application opportunities are provided during the year.

### Programs, Deadlines and Numbers of awardees

#### ■ International Fellowships for Individual Researchers

Program	Apply to	Call	Deadline	Periods for arrival in Japan	Awardees
Summer Program <p.8>	CNRS	-	Middle of Nov.	Around middle of Jun.	16
Postdoctoral Fellowship <p.10> (Short-term)	CNRS	1st	Beginning of Nov.	From Apr. to Mar.	13
		2nd	Middle of Apr.	From Oct. to Mar.	
	JSPS HQ	1st	End of Sep.	From Apr. to Mar.	20
		2nd	Middle of Jan.	From Aug. to Mar.	20
		3rd	Beginning of Jun.	From Jan. to Mar.	20
Postdoctoral Fellowship <p.12> (Standard)	CNRS	1st	Beginning of Nov.	From Apr. to Mar.	15
		2nd	Middle of Apr.	From Oct. to Nov.	
	MUR	-	End of Feb.	From Oct. to Nov.	6
	JSPS HQ	1st	Beginning of Sep.	From Apr. to Sep.	115
		2nd	End of Apr.	From Sep. to Nov.	115
Invitational Fellowship <p.18> (Long-term)	JSPS HQ	-	Beginning of Sep.	From Apr. to Mar.	60
Invitational Fellowship <p.20> (Short-term)	JSPS HQ	1st	Beginning of Sep.	From Apr. to Mar.	85
		2nd	End of Apr.	From Oct. to Mar.	75

*The schedule for next year is to be announced in April.*

#### Notes:

- The information above is **just for your reference** and is subject to change without notice.
- The application deadlines will be announced on the JSPS HQ or CNRS/MUR website. Please check these websites constantly. The deadlines are set on almost the same date every year.
- The number of awardees of « Application to JSPS HQ » includes applications from France/Italy as well as from other countries while « Application to CNRS/MUR » is for researchers in France/Italy only.

#### ■ Bilateral Joint Research Projects /Seminars p.22

Counterpart Institution (Country)	Activity type	Deadline	Duration	Max # to be selected
Inserm (France)	Joint seminars	Beginning of Sep.	2 to 3 days (*)	1
MEAE-MESR (France)	Joint Research Projects		From more than 1 year to 2 years	12
CNR (Italy)	Joint Research Projects		2 years	4 (**)

*The schedule for next year is to be announced in June.*

*\*It is necessary to be held between Apr. and Dec.*

*\*\* The call for proposals will be announced every two years.*

#### ■ Core-to-Core Program (Multilateral) p.26

Activity type	Min # countries	Deadline	Duration	Max # to be selected
Multilateral Joint research Multilateral Joint seminar	3 (Including Japan)	Beginning of Oct.	5 years	9

*\* The schedule for next year is to be announced in July.*

#### ■ Open Research Area for the Social Sciences p.27

Organization (Country)	Activity type	Min # countries	Deadline	Duration	Max # to be selected
ANR(France) DFG(Germany) ESRC(UK) SSHRC(Canada)	Joint research	4 (Including Japan)	Middle of Nov.	2 - 3 years	2

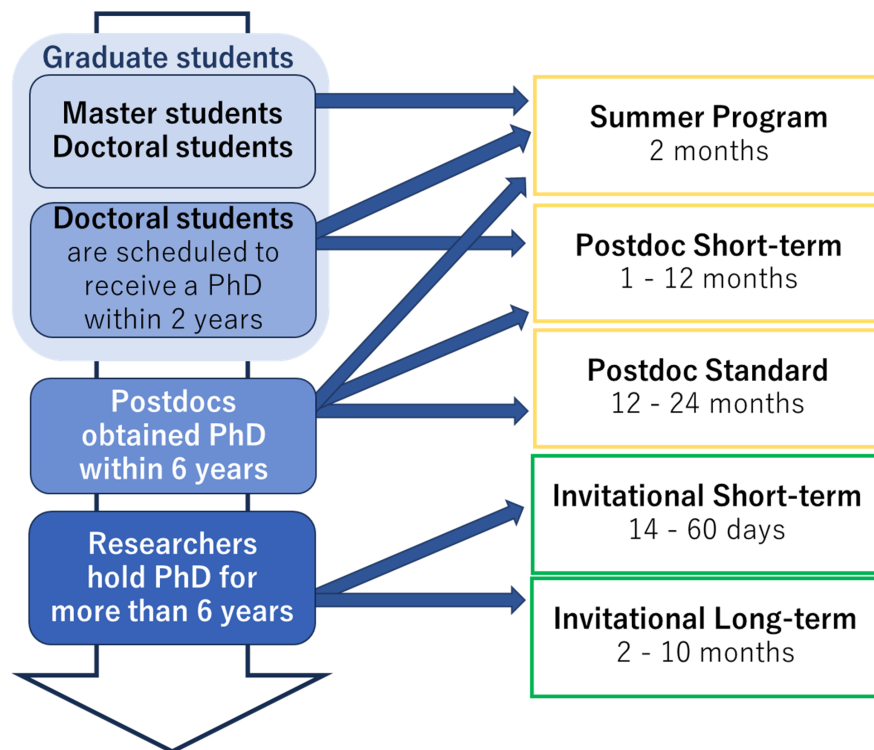
#### Notes (common):

The information above is **just for your reference** and is subject to change without notice.

### 3. International Fellowships for Individual Researchers

JSPS provides fellowship programs for overseas researchers who have an excellent record of research achievements to conduct collaborative research, discussions, and opinion exchanges with researchers in Japan.

These programs consist of five types: “Summer Program”, “Postdoc Short-term” and “Postdoc Standard” for young researchers, and “Invitational Short-term” and “Invitational Long-term” for mid-career and senior researchers.



#### Tips for Application

Here are the useful websites when you look for your host institution in Japan

- List of eligible host institutes:

[https://www.isps.go.jp/file/storage/j-fellow/j-summer/List\\_of\\_Eligible\\_Host\\_2025.pdf](https://www.isps.go.jp/file/storage/j-fellow/j-summer/List_of_Eligible_Host_2025.pdf) (PDF)

PDF/1.5MB



<https://www.isps.go.jp/english/e-fellow/e-summer/index.html> (Host page)



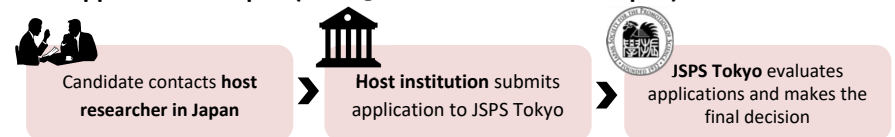
- researchmap (Database which provides scientific information on researchers in Japan):

<https://researchmap.jp/?lang=en>



#### Application Procedures

##### Application in Japan (through host researchers in Japan)



**Note:** Each Japanese institution has a different deadline (usually about one month prior to the one set by JSPS). Please make sure to confirm the schedule carefully with your host researcher.

##### Application in France/Italy (through CNRS/MUR)



**Note:** Researchers who belong to any research institution/university etc. are able to apply through CNRS/MUR. All the candidates are evaluated under the same criteria.



## Summer Program



<https://www.jps.go.jp/english/e-summer/index.html>

- Please refer to the latest CNRS application guidelines for more details.
- Please note that the information below is based on the 2025 program and is subject to change without notice.

### ■ Purpose

The JSPS Summer Program is implemented as a component of the JSPS Postdoctoral Fellowships for Research in Japan. Carried out in partnership with The Graduate University for Advanced Studies (SOKENDAI), the program provides opportunities for young pre- and post-doctoral researchers from North America and Europe to receive an orientation on Japanese culture and research systems and to pursue research under the guidance of host researchers at a Japanese university or research institute over a period of two months during the summer.

JSPS seeks cooperation from its overseas partners in recruiting candidates for the program, including from Centre National de la Recherche Scientifique (CNRS, France).

### ■ Fields of Research

All fields of the humanities, social sciences and natural sciences

### ■ Duration of Program

Two months starting June through August

### ■ Candidate Eligibility

- (1) Nationality:  
Be a citizen of the UK, France, Germany, Canada, Sweden, and the US (Others with equivalent status may apply if approved by the nominating authority in one of the above countries).
- (2) Academic Status:  
Be enrolled in a university graduate program or hold a doctorate degree when the program goes into effect, which must have been received within six years prior to April 1 of the said year (not required to hold full-time position).
- (3) Candidates must receive in advance acceptance from their host researcher.
- (4) Candidates must aspire to become a researcher in future.

#### Note:

Those who have previously been awarded a fellowship under the JSPS Postdoctoral Fellowships for Research in Japan are not eligible.

### ■ Host Researcher Eligibility

The host researcher must, in principle, be a researcher who is employed full-time or classified as being employed full-time at a university or research institution that is eligible to apply to MEXT for funding under the Grants-in-Aid for Scientific Research (*KAKENHI*).

#### Note:

Full-time employment classification is determined by the regulations of the host institution.

### ■ Terms of Award (as of 2025)

- (1) International travel: Round-trip airfare
- (2) Maintenance allowance (¥534,000)  
JSPS will also cover the following expenses separately from the maintenance allowance:  
accommodation charges at Narita or Haneda (June 16th) and Tokyo (August 25th), and meals and accommodation charges during the orientation session (June 17th-19th).
- (3) Overseas travel insurance
- (4) Research support allowance (Optional, ¥158,500)

### ■ Application Procedures

JSPS receives applications to this program only through CNRS for French candidates. If you are interested in this program, please contact CNRS about the detailed application procedures.

#### Notes:

- CNRS accepts applications also from researchers who do not belong to CNRS or CNRS research units.
- Contact information on CNRS is indicated on the last part of this brochure.

### ■ Schedule for the Program (as of 2025)

Dates	Location	Activities
April or May	Online	Online Kick-off Meeting
16 June	Narita or Haneda	Arrival in Japan
17 June - 19 June	SOKENDAI in Hayama	Orientation Program <ul style="list-style-type: none"> <li>• Japanese language lessons</li> <li>• Culture experience</li> <li>• Poster presentation</li> </ul>
20 June - 24 August	Host institutions	Research experience at host institutions Homestay program (optional)
25 August	Tokyo	Research report presentation in Tokyo

## Postdoctoral Fellowship (Short-term)



<https://www.jsps.go.jp/english/e-oubei-s/index.html>

➤ Please refer to the latest JSPS/CNRS application guidelines for more details

### ■ Purpose

To provide opportunities for **pre-/post-**doctoral researchers from Europe, the US and Canada\* to conduct under the guidance of their hosts cooperative research with leading research groups in universities and other Japanese institutions.

\*Eligible countries are European Union Countries (as of 1 April 2024), the UK, the US, Canada, Switzerland, Norway and Russia.

### ■ Fields of Research

All fields of the humanities, social sciences and natural sciences

### ■ Duration of Program

1 to 12 months

### ■ Candidate Eligibility

Persons are eligible to apply who satisfy the following two conditions at the time of application, selection and during the fellowship period.

#### (1) Nationality:

Be a citizen or permanent resident of an eligible country. Also eligible are persons who have been engaged in research continuously over a period of at least three years at a university or research institution in one of the eligible countries. They must be from a country that has diplomatic relations with Japan or be from Taiwan or Palestine and have conducted research continuously for three or more years before JSPS's application submission deadline and must possess an excellent research record.

#### Note:

In France, both permanent residents and foreign researchers who have/will acquire a doctoral degree in France are eligible to apply for this program through CNRS on the condition that they satisfy CNRS's requirements.

#### (2) Academic Status:

Have obtained their doctoral degree at a university outside Japan within six years of the date the fellowship goes into effect, or currently be enrolled in a doctoral course at a university outside Japan, and scheduled to receive PhD. within two years from the time that their research starts in Japan.

#### Notes:

- Those who have previously been awarded a fellowship under the JSPS Postdoctoral Fellowship for Research in Japan ([Standard], [Short-term] or [Pathway to University positions in Japan]) are not eligible. This Short-term Fellowship is only awarded once per researcher.
- Researchers who do not belong to CNRS, CNR can also apply. All the candidates from universities, grandes ecoles, CNRS, Inserm, INRA, Inria, CEA, CNR etc. are evaluated under the same criteria.

### ■ Host Researcher Eligibility

Persons are eligible to apply who satisfy the following two conditions at the time of application, selection, and during the fellowship period.

- (1) Be affiliated with a research institution specified in the application guidelines, be eligible to apply for a KAKENHI grant, and wish to host an overseas researcher.
- (2) Be a full-time researcher. However, researchers who are not employed full time may be eligible if the host institution judges them able to execute their responsibility to carrying out the program uninterrupted throughout the fellow's tenure including providing him/her a suitable research environment (e.g., laboratory, space, facilities and personnel) in the same way that a full-time researcher would be able to do.

#### Note:

When host researchers in Japan apply for this program, they may submit up to three applications, which they are to assign a priority order.

### ■ Terms of Award

- (1) Airfare: A round-trip air ticket (based on JSPS's regulations)
- (2) Maintenance Allowance:
  - a) For PhD holders: ¥362,000 per month
  - b) For non-PhD holders: ¥200,000 per month
- (3) Miscellaneous: A settling-in allowance of ¥200,000 (only applicable for Fellows with 3 or more months of tenure), overseas travel insurance, etc.

#### Notes:

- A "research support allowance" is available to cover cooperative research-related expenses. Application is made by the host researcher through his/her institution.
- The amounts of the award indicated above are subject to change for budgetary reasons.
- If the candidate resides in Japan before the fellowship starting date, the "airfare" for the flight to Japan and the "settling-in allowance" will not be provided.

### ■ Application Procedures

#### (1) Open recruitment:

The application for the program should be submitted through the host institution in Japan (Individual applications are not accepted). The host institution must submit the complete documents to JSPS by the end of the application period.

#### Note:

Please note that your host institution in Japan may give you an early deadline to compile all application forms that will be submitted to JSPS (it could be more than a month before the deadline set by JSPS, depending on the procedure each host institution takes).

#### (2) Application through an Overseas Nominating Authority:

JSPS also accepts applications through its foreign nominating agency, the JSPS Strasbourg Office, which works with CNRS in France. For information on how to apply, please visit the CNRS website.

## Postdoctoral Fellowship (Standard)



<https://www.jpsps.go.jp/english/e-fellow/application.html>

➤ Please refer to the latest JSPS/CNRS/MUR application guidelines for more details

### ■ Purpose

To provide opportunities for excellent postdoctoral researchers from other countries to conduct cooperative research under the guidance of their hosts with leading research groups in universities and other Japanese institutions.

### ■ Fields of Research

All fields of the humanities, social sciences and natural sciences

### ■ Duration of Program

12 to 24 months

### ■ Candidate Eligibility

Persons are eligible to apply who satisfy the following two conditions at the time of application, selection, and during the fellowship period.

#### (1) Nationality

Be a citizen of a country that has diplomatic relations with Japan (JSPS treats Taiwanese and Palestinian researchers in this manner).

#### Notes:

- In France, both permanent residents and foreign researchers who have/will acquire a doctoral degree in France are eligible to apply for this program through CNRS on the condition that they satisfy CNRS's requirements.
- Researchers who do not belong to CNRS, CNR can also apply. All the candidates from universities, grandes écoles, CNRS, Inserm, INRA, Inria, CEA, CNR etc. are evaluated under the same criteria.
- In Italy, no precautions then those established in the applicant's guideline.

#### (2) Academic Status

Have obtained a doctorate degree within six years of the date the fellowship goes into effect.

#### Note:

- Those who have previously been awarded a fellowship under the JSPS Postdoctoral Fellowship for Research in Japan ([Standard] and [Pathway to University positions in Japan]) are not eligible.

### ■ Host Researcher Eligibility

Persons are eligible to apply who satisfy the following two conditions at the time of application, selection, and during the fellowship period.

- (1) Be affiliated with a research institution specified in the application guidelines, be eligible to apply for a KAKENHI grant, and wish to host an overseas researcher.
- (2) Be a full-time researcher. However, researchers who are not employed full time may be eligible if the host institution judges them able to execute their responsibility to carrying out the program uninterruptedly throughout the fellow's tenure including providing him/her a suitable research environment (e.g., laboratory, space, facilities and personnel) in the same way that a full-time researcher would be able to do.

#### Note:

When host researchers in Japan apply for this program, they may submit up to three applications, which they are to assign a priority order.

### ■ Terms of Award

- (1) Airfare: A round-trip air ticket (based on JSPS's regulations)
- (2) Maintenance Allowance: ¥362,000 per month
- (3) Miscellaneous: A settling-in allowance of ¥200,000, overseas travel insurance, etc.

#### Notes:

- A Grant-In-Aid for Scientific Research is available to cover cooperative research-related expenses. Application for this grant is made by the host researcher through his/her institution.
- The amounts of the Award indicated above are subject to change for budgetary reasons.
- If the candidate resides in Japan before the fellowship starting date, the "airfare" for the flight to Japan and the "settling-in allowance" will not be paid.

### ■ Application Procedures

#### (1) Open recruitment:

The application for the program should be submitted through the host institution in Japan (Individual applications are not accepted). The host institution must submit the complete documents to JSPS by the end of the application period.

#### Note:

Please note that your host institution in Japan may give you an early deadline to compile all application forms that will be submitted to JSPS (it could be more than a month before the deadline set by JSPS, depending on the procedure each host institution takes).

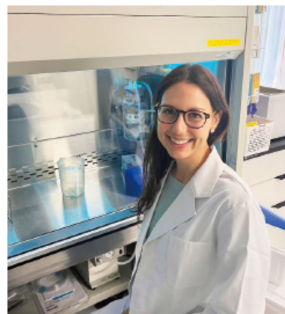
#### (2) Application through an Overseas Nominating Authority

JSPS also receives applications for the program through foreign nominating authorities such as CNRS in France and MUR in Italy. For information on application procedures, please contact directly the nominating authority in your country.



## Message from JSPS Fellow – Postdoctoral Fellowships

Name: **Laura Barbieri, PhD**  
 Affiliation: Osaka Metropolitan University  
 Graduate School of Medicine  
 Duration in Japan: 2019 Summer Program (SP)  
 2022-2023 Short-term (PE)  
 2023-2025 Standard (P)  
 Host institution in Japan: SP: University of Tokyo  
 PE/P: Present Affiliation



### What made you decide to apply for JSPS Postdoctoral Fellowships for Research in Japan, and to participate in multiple fellowship programs?

My journey with JSPS began in 2019 with the Summer Program. My host, Prof. Takeda at the University of Tokyo (UTokyo), was introduced to me by my PhD supervisor. During the program, I met several inspiring researchers, some of which I currently work with. One day, chatting of science and life with a colleague, I learnt about a team in Osaka Metropolitan University (OMU) doing fieldwork and field-based studies in Africa. This sparked my curiosity and I started to think of going beyond lab-based research. I decided to visit OMU, where I learnt about Prof. Kaneko and his work on malaria in Kenya. After the program, I contacted Prof. Kaneko about doing a postdoc in his lab. This marked the beginning of my journey at OMU. Thinking back, I embarked in an international career quite early in my studies and I am very glad that I did. I'd say that networking played a crucial role in shaping my path. It might feel difficult for overseas researchers to find a host supervisor in Japan. For the Summer Program, not knowing about the database of researchers, I simply Googled based on my research topic. I didn't have much time left, and with many websites in Japanese and the time difference, I was afraid of not making it. But I didn't give up and sent several emails and promptly got some replies. Then my PhD supervisor, who knew Prof. Takeda at UTokyo, suggested that I contacted him. Given the pre-existing connection and the research background, he was the best option for me. He accepted my research proposal and helped me tailor it to the lab's expertise. We had a long exchange of emails, ideas, and online meetings to develop a feasible work plan. I believe that this made our collaboration solid and my application stronger. In fact, finding the right lab involves seeking advice. Having guidance ensures a smoother transition and better understanding of the work environment. To prospective fellows, I highly recommend reaching out to your connections in Japan, if you already have any, or if you don't, like me at the time, establishing new ones and starting familiarising with the Japanese academic landscape.

Depending on your priorities, you might focus on a particular field or professor. Or, if you are

flexible about the topic, you might prioritise the location. There are many ways to choose a lab! Ask your friends, search databases, read papers, find authors. Talk to colleagues, send emails, and above all, try to gain an understanding of the environment and atmosphere in the lab. Building good relationships is crucial for a positive experience!

Conferences and social media are good platforms to expand your network. Once a connection is established, it's important to nurture it. Reach out, participate in lab meetings, be proactive, and show your interest! Whether in person or online, staying connected is vital. The Summer Program was an amazing experience that fuelled my desire to return to Japan. Back in Sweden, although I had to focus on completing my PhD, I stayed in touch with my colleagues in Japan. At Karolinska Institutet I had the chance to meet Prof. Kaneko in person and discuss a project proposal. He welcomed me to join his team, upon securing my own funding. So, I started looking for grants. I knew that JSPS had some appealing postdoc programs and given my positive experience, it was the first option that came to my mind. I started working on my project proposal while I was doing my PhD. Upon graduating, I visited the field in Kenya. This was crucial to understand the work dynamics and fully comprehend the research background. I participated in fieldwork activities while applying to all the fellowships that I could find, although JSPS remained my target. After a few rejections, including from JSPS, eventually at the second round I managed to secure the Short-term (max 1 year) fellowship. This was a strategic move: while the JSPS Standard Program (max 2 years) prevents subsequent applications, Short-term fellows are allowed to apply for the Standard Program. It was a bit of a bet, but thankfully my application got approved and I could secure a total of three years with JSPS. Compared to other fellowships, which might be tight to a specific location and schedule, I think JSPS offers more flexibility. In my case for example, I work from home, the lab, the office, or even from Kenya when I need to visit the field. As a JSPS researcher, you associate to your host supervisor's university without being employed by it. This allows for more independence. I like to think of it as being a freelance researcher!

### Please explain the experience of participating in JSPS's multiple fellowship programs and the benefits you have gained from that:

For me, having a global network of friends and colleagues is one of the best parts of being a researcher. Compared to my experience in Europe, it's a bit harder to interact with other researchers in Japan, mainly due to the language and the very tight working schedules of Japanese researchers. At domestic conferences, most talks are in Japanese and there are fewer opportunities for mingling. However, with a bit of perseverance and (politely!) putting myself forward without too much hesitation, I've managed to build strong connections. Same goes for the personal life. Thus, despite the language barrier and other difficulties, I was able to make valuable connections through the length of my stay in multiple programs and through my own efforts and persistence. I also organized a small poster session at OMU, which was enthusiastically received by the university faculty. As my community grows, I manage to stay connected to my colleagues via

the several Alumni associations, including the JSPS Alumni network.

### What made you decide to develop your career in Japan, and what are the merits of living in Japan, such as convenience of living?

I haven't defined my future plans yet, but I am trying to make the most out of this unique experience which extends beyond research. Participating in international programs such as the JSPS ones is an opportunity to expand our network, explore new fields and engage in interdisciplinary projects, while learning about another culture and lifestyle. Thanks to these fellowships, I've realized that I enjoy fieldwork and international projects, and I am using the skills and knowledge that I acquired to drive my career path forward. Reflecting on my attraction to Japan, I realise that I've always been drawn to Asia, and particularly to Japan. Its culture and nature have always fascinated me and growing up watching Japanese anime maybe played a part too! The Summer Program was a fantastic experience and definitely nurtured this feeling. Generally, I enjoy exploring new environments and challenging myself, for example to adapt to new habits. Of course, living abroad has also its challenges and sometimes I miss home... However, being immersed in such a different culture as the Japanese one is profoundly enriching my life, as I keep on learning new things that change myself and the way I think and live. In fact, I often face situations that surprise me and force me to reconsider my attitudes. I think it's an amazing opportunity to get to know myself and the world around me better. Also, I am particularly enjoying the possibility of safely and easily going almost anywhere in the country simply by catching a train. Of course, not to mention the food! As for the language, although I don't need Japanese at work or to survive, I think it is important to be able to communicate to locals and to feel more part of the society. Personally, I enjoy being able to express myself and feel independent. So, I would recommend trying to learn at least some Japanese, especially for a longer stay. It will definitely enrich your experience!!

In summary, my experience in Japan has, so far, been very fulfilling. Both from a personal and professional perspective, the time I've spent here and the people I've met have already profoundly shaped my life and career path in a way that I would have never expected. I am very grateful to JSPS for this opportunity and looking forward to the years to come!

#### 【Reference】

JSPS Career Advancement through Multiple JSPS Fellowships  
Voices of Two JSPS Fellows

URL : <https://www.jsps.go.jp/file/storage/i-publications/data/Career%20Advancement%20through%20Multiple%20JSPS%20Fellowships.pdf>

## More stories from JSPS Fellows

### JSPS Fellowship Bright Stories



PDF/23MB



[https://www.jsps.go.jp/file/storage/i-inv/pamphlet/jsp\\_s\\_fellowship\\_bright\\_stories.pdf](https://www.jsps.go.jp/file/storage/i-inv/pamphlet/jsp_s_fellowship_bright_stories.pdf)

### Career Advancement through Multiple JSPS Fellowships



PDF/3.3MB



<https://www.jsps.go.jp/file/storage/i-publications/data/Career%20Advancement%20through%20Multiple%20JSPS%20Fellowships.pdf>

## Invitational Fellowship (Long-term)



<https://www.jsps.go.jp/english/e-inv/index.html>

➤ Please refer to the latest JSPS application guidelines for more details

### ■ Purpose

To invite overseas researchers with excellent records of research achievements to collaborate with Japanese colleagues in carrying out research through long-term visits.

### ■ Fields of Research

All fields of the humanities, social sciences and natural science

### ■ Duration of Program

2 to 10 months

### ■ Candidate Eligibility

Persons are eligible to apply who satisfy the following two conditions at the time of application, selection, and during the fellowship period.

#### (1) Nationality:

Be a citizen or permanent resident of a country that has diplomatic relations with Japan. (Taiwan and Palestine are treated in this manner.) Persons of Japanese nationality are eligible to apply if they have resided at the time of application in a foreign country for 10 years or longer and are judged to have played an active role at a host research institution in that country's scientific community.

#### (2) Employment Status:

Be a full-time researchers or person with full-time researcher status at a university or research institution in a foreign country and have a position equivalent to a professor, associate professor or assistant professor in Japan (including positions such as professor emeritus). Researchers of other status may apply if it has been six years or longer since they obtained their doctoral degree and the host research institution judges them to have continuously conducted research at a university or research institution.

### ■ Host Researcher Eligibility

Persons are eligible to apply who satisfy the following two conditions at the time of application, selection, and during the fellowship period.

- (1) Be affiliated with a research institution as specified in the application guidelines, be eligible to apply for a KAKENHI grant, and wish to host an overseas researcher.
- (2) Be a full-time researcher. However, researchers who are not employed full time may be eligible if the host institution judges them able to execute their responsibility to carrying out the program uninterrupted throughout the Fellow's tenure including providing him/her a suitable research environment (e.g., laboratory, space, facilities and personnel) in the same way that a full-time researcher would be able to do.

### ■ Terms of Award

- (1) Airfare: A round-trip air ticket (economy- class) (based on JSPS's regulations)
- (2) Maintenance Allowance: ¥387,600 per month
- (3) Overseas travel insurance
- (4) Research support allowance: Up to ¥150,000 (Application is made by the host researcher through his/her institution.)

#### Notes:

The amounts of the award indicated above are subject to change for budgetary reasons. If the candidate resides in Japan before the fellowship starting date, the "airfare" for the flight to Japan will not be paid.

### ■ Application Procedures

The application for the program should be submitted through the host institution in Japan (Individual applications are not accepted). The host institution must submit the complete documents to JSPS by the end of the application period.

#### Note:

Please note that your host institution in Japan may give you an early deadline to compile all application forms that will be submitted to JSPS (it could be more than a month before the deadline set by JSPS, depending on the procedure each host institution takes).

## Invitational Fellowship (Short-term)



<https://www.jsp.go.jp/english/e-inv/index.html>

➤ Please refer to the latest JSPS application guidelines for more details

### ■ Purpose

To invite overseas researchers with excellent records of research achievements for short-term visits to Japan and provide them opportunities for discussions, opinion exchanges, lectures and other activities.

### ■ Fields of Research

All fields of the humanities, social sciences and natural sciences

### ■ Duration of Program

14 to 60 days

### ■ Candidate Eligibility

Persons are eligible to apply who satisfy the following two conditions from 1 April 2024 and during the fellowship period.

#### (1) Nationality:

Be a citizen or permanent resident of a country that has diplomatic relations with Japan. (Taiwan and Palestine are treated in this manner.) Persons of Japanese nationality are eligible to apply if they have resided at the time of application in a foreign country for 10 years or longer and are judged to have played an active role at a host research institution in that country's scientific community.

#### (2) Employment Status:

Be a full-time researchers or person with full-time researcher status at a university or research institution in a foreign country and have a position equivalent to a professor, associate professor or assistant professor in Japan (including positions such as professor emeritus). Researchers of other status may apply if it has been six years or longer since they obtained their doctoral degree and the host research institution judges them to have continuously conduct research at a university or research institution.

### ■ Host Researchers and Institutes

Persons are eligible to apply who satisfy the following two conditions at the time of application, selection, and during the fellowship period.

- (1) Be affiliated with a research institution as specified in the application guidelines and be eligible to apply for a KAKENHI grant.
- (2) Be a full-time researcher. However, researchers who are not employed full time may be eligible if the host institution judges them able to execute their responsibility to carrying out the program uninterruptedly throughout the fellow's tenure including providing him/her a suitable research environment (e.g., laboratory, space, facilities and personnel) in the same way that a full-time researcher would be able to do.

### ■ Terms of Award

- (1) Airfare: A round-trip air ticket (economy- class) (based on JSPS's regulations)
- (2) Maintenance Allowance: ¥18,000 per day
- (3) Overseas travel insurance
- (4) Research support allowance: Up to ¥150,000 (Application is made by the host researcher through his/her institution.)

#### Notes:

- The amounts of the award indicated above are subject to change for budgetary reasons.
- If the candidate resides in Japan before the fellowship starting date, "airfare" for the flight to Japan will not be paid.

### ■ Application Procedures

The application for the program should be submitted through the host institution in Japan (Individual applications are not accepted). The host institution must submit the complete documents to JSPS by the end of the application period.

#### Note:

Please note that your host institution in Japan may give you an early deadline to compile all application forms that will be submitted to JSPS (it could be more than a month before the deadline set by JSPS, depending on the procedure each host institution takes).

## 4. Bilateral Programs

<https://www.jsps.go.jp/english/e-bilat/index.html>



### Purpose

The aim of these programs is to form sustained networks evolved from individual scientist exchanges including young scientists. JSPS provides financial support to the scientists implementing such bilateral joint research projects and seminars between research teams from Japan and counterpart countries.

Bilateral Joint Research Projects/Seminars comprise of two components: (A) Bilateral Joint Research Projects/Seminars with JSPS's Counterpart Agencies and (B) Open Partnership Joint Research Projects/Seminars. The latter provides Japanese researchers an opportunity to conduct research or hold a seminar with researchers around the world who reside in a country that has diplomatic relations with Japan. (JSPS also treats researchers who reside in Taiwan and Palestine in this manner.)

### Eligibility

Applicants must hold a full-time or equivalent position as a researcher at a university or research institution. Please confirm the details to the corresponding organizations.

### Targeted Research Field

All fields of the humanities, social sciences and natural sciences.

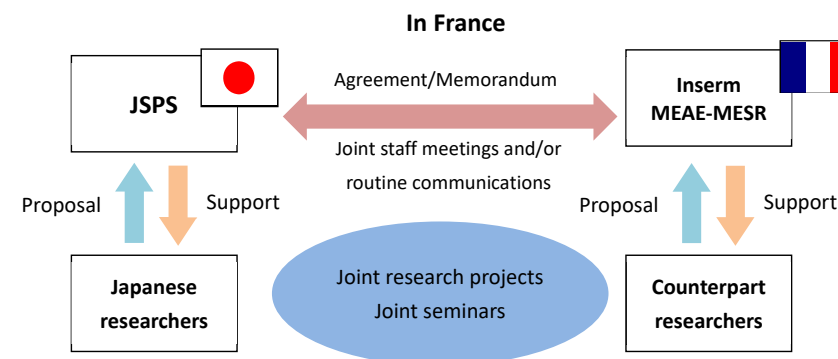
### Expenses supported by JSPS

JSPS consigns the administration of projects to the Japanese team leader's affiliated institution. When using funds, please follow JSPS's rules. JSPS does not pay the institution a consignment fee.

JSPS covers the following expenses of researchers on the Japanese team:

International travel, Domestic travel, other expenses (Consumables, honoraria, printing, communication) and <for Seminar scheme> Meeting expenses (in Japan).

## Bilateral Joint Research Projects/Seminars with JSPS's Counterpart Agencies



### < Inserm (France) >

Activity Type	Duration	Funding	Subject Areas
Joint Seminars	<b>2 to 3 days</b> *Must be held during the period between April and December.	JSPS : Up to ¥2,500,000 Inserm: Up to €12,000	Life Science and Health

#### Notes:

- French PIs and other members must be employed at Inserm.
- French PIs are to submit their applications to Inserm, and Japanese PIs are to JSPS HQ. Applications submitted by only either side will not be accepted.

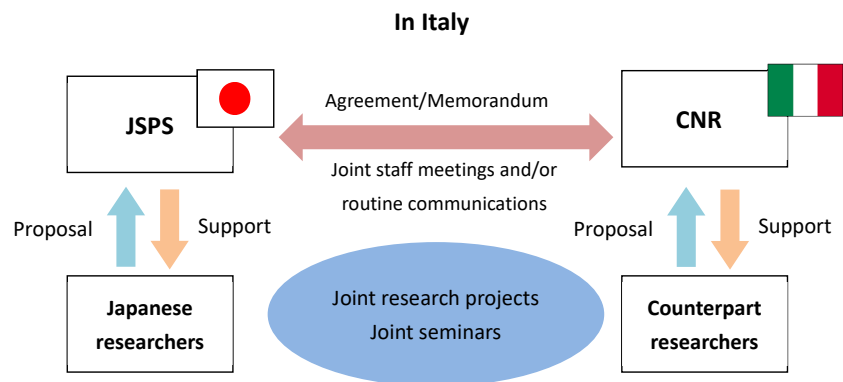
### < MEAE-MESR (France) > « SAKURA Program »

Activity Type	Duration	Funding	Subject Areas
Joint Research Projects	<b>From more than 1 year to 2 years</b> *Starting date must be set during the period between April and next March in Japan.	JSPS: Up to ¥1,000,000 per fiscal year MEAE-MESR: Up to €6,000 per fiscal year	All fields of the Humanities, Social Sciences and Natural Sciences

#### Notes:

- The program aims at supporting the establishment of innovative scientific collaborations led by young talented researchers in both countries.
- French PIs are to submit their applications to MEAE-MESR, and Japanese PIs are to JSPS HQ. Applications submitted by only either side will not be accepted.





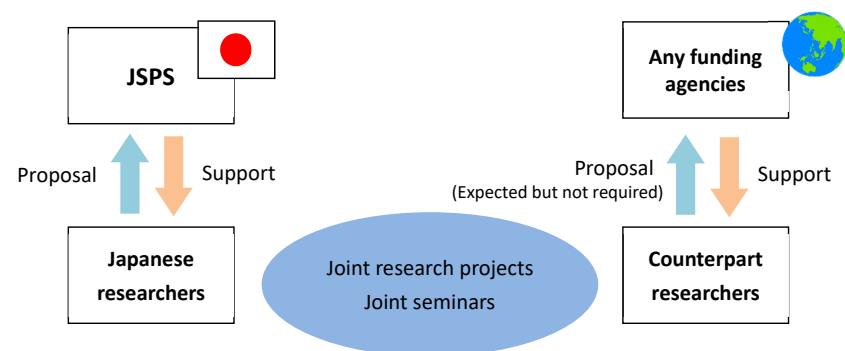
### < CNR (Italy) >

Activity Type	Duration	Funding	Subject Areas
Joint Research Projects	<b>2 years</b> *Starting date must be set during the period between April and December in Japan.	JSPS: Up to ¥1,200,000 per fiscal year CNR: Up to €8,000 per fiscal year	All fields of the Humanities, Social Sciences and Natural Sciences

#### Notes:

- Italian PIs must be CNR personnel or affiliated with research institutes under CNR.
- Italian PIs are to submit their applications to CNR, and Japanese PIs are to JSPS HQ. Applications submitted by only either side will not be accepted.
- The call for proposals with CNR will be announced every two years.

### Open Partnership Joint Research Projects/Seminars



JSPS only supports the expenses of Japanese teams. To conduct research exchanges, counterpart PIs are encouraged to secure funding from the sources in their countries to cover the expenses. The acquisition of such funding may be taken into account in JSPS's selection process.

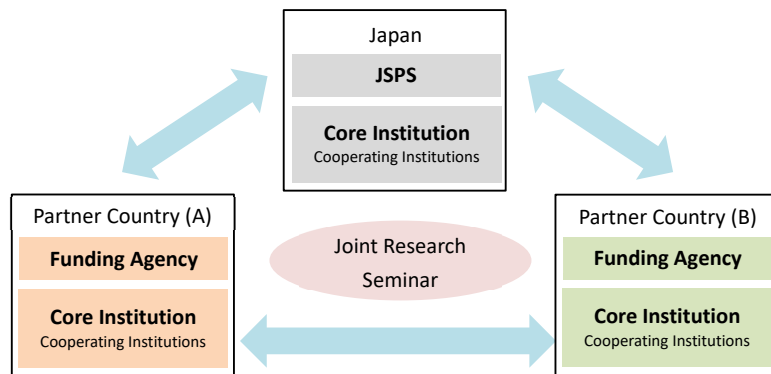
Activity Type	Duration	Funding	Subject Areas
Joint Research Projects	1 to 2 years	Up to ¥2,000,000 per fiscal year	All fields of the Humanities, Social Sciences and Natural Sciences
Joint Seminars	within 1 week	Up to ¥2,000,000 in total	

## 5. Other Programs

### JSPS Core-to-Core Program: Advanced Research Networks (Japanese researchers' initiatives)



<https://www.jsps.go.jp/english/e-c2c/index.html>



#### ■ Purpose

This program is designed to create world-class research hubs in research fields considered to be cutting-edge and internationally important in Japan. These multilateral hubs are built and operated through sustainable collaborative relations established among research/education institutions in Japan and countries around the world.

#### ■ Targeted Research Fields

Research topics considered to be cutting-edge and internationally important in Japan. (All fields of the humanities, social sciences and natural sciences.)

#### ■ Eligibility of Japanese Applicants

- (1) Japanese universities and research institutions are eligible as a core institution.
- (2) Each core institution must have one project coordinator. She/he must be a full-time researcher or a researcher positioned as full time at the core institution.

#### ■ Project Period

5 years

#### ■ Project Funding

Up to ¥18,000,000 per fiscal year

#### ■ Number of Projects

About 9 projects

### ORA (Open Research Area for the Social Sciences) Program



[https://www.jsps.go.jp/english/e-bottom/01\\_d\\_outline.html](https://www.jsps.go.jp/english/e-bottom/01_d_outline.html)

#### ■ Purpose

In cooperation with ANR, DFG, ESRC and SSHRC, this program provides funding for international joint research carried out between excellent researchers in Japan and cooperation partners in 4 countries (France, Germany, UK, Canada). The purpose of this program is to strengthen collaboration while achieving a high level of synergy in research conducted in the fields of social sciences.

#### ■ Targeted Research Fields

Social sciences

#### ■ Eligibility

##### • French Applicants

For eligibility requirements of French PIs and project participants, please refer to the ORA's application guidelines.

##### • Japanese Applicants

Applicants (PIs) must be researchers affiliated with a university or research institute in Japan and they must be eligible to apply for a Grants-in-Aid for Scientific Research (KAKENHI).

#### ■ Project Period

2 to 3 years

#### ■ Funding

##### • From ANR on French Side

Please refer to the ORA's application guidelines.

##### • From JSPS on Japanese Side

Up to ¥10,000,000 per fiscal year / Up to ¥30,000,000 for whole project period

## Frontiers of Science (FoS) Symposium



<https://www.jps.go.jp/english/e-jffos/index.html>

### ■ Purpose

Frontiers of Science (FoS) symposiums are one of the programs that the Japan Society for the Promotion of Science carries out jointly with partner institutions in other countries for the purpose of fostering young researchers. These symposiums bring together excellent young researchers from Japan and counterpart countries in a highly diverse cross-disciplinary environment, in which they brainstorm topics on the cutting edge of science in ways that crisscross and transcend the borders of academic domains. While cultivating leaders with wide interdisciplinary perspectives, these symposiums also contribute to scientific advancement by honing researchers who can use their own creativity and free ideas in ways that are powerfully innovative, not anchored to existing disciplines.

JSPS holds Japanese-French Frontiers of Science (JFFoS) symposiums in partnership with CNRS.

### ■ Participants' Eligibility

To qualify for participation in the FoS symposiums, researchers must have received their doctorate and be age 45 or younger as of 1 April of the year the symposium is held or have received their doctorate within the past 15 years.

### ■ 11th JFFoS

Date: May 24 - May 27, 2024

Venue: Strasbourg, France

The number of participants: 60  
(30 French and 30 Japanese)



### ■ 12th JFFoS

- Date: June 4 - June 7, 2026
- Venue: TBD, Japan

## 6. Receiving Japanese Researchers in France/Italy

JSPS provides fellowships and grants to Japanese researchers who wish to conduct research at overseas universities and research institutions. Researchers in France and other countries can host these researchers as visiting researchers.

### Overseas Research Fellowships



<https://www.jps.go.jp/english/e-ab/>

### ■ Purpose

To foster highly capable researchers with wide international perspectives, this fellowship gives excellent young Japanese researchers an opportunity to carry out long-term research at an overseas university or research institution.

### ■ Targeted Research Fields

All fields of the humanities, social sciences and natural sciences

### ■ Eligibility for Japanese researchers

- (1) To be eligible, a candidate must satisfy one of the following two requirements:
  - 1.1 Postdoctoral researcher employed as researcher in a Japanese university, research institution, or national laboratory.
  - 1.2 Postdoctoral researcher who aspires to an above-listed research position.
- (2) The candidate must have received a doctoral degree within 5 year of the date 1 April at the time of starting fellowship tenure.
- (3) The candidate must not have more than a cumulative total of 5 years in a permanent full-time research position at a university or other research institution.
- (4) The candidate must be a citizen of Japan; or if a foreign national, must have permanent resident status in Japan.

### ■ Terms of Award

- Tenure: 2 years
- Financial support:
  - Airfare: Round-trip international airfare
  - Maintenance allowance (yearly): ¥6,278,000

### Others

Researchers in Japanese institutions can apply to Grants-in-Aid for Scientific Research (*KAKENHI*) which includes the budget to visit overseas research institutions.

## 7. Contact Information

### ■ JSPS Strasbourg Office

Address : c/o Maison Universitaire France-Japon  
42a, avenue de la Forêt Noire, 67000 Strasbourg  
Tel : +33(0)3 68 85 20 17  
E-mail : [jsps@unistra.fr](mailto:jsps@unistra.fr)  
URL : <https://jsps-strasbourg.com/>

### ■ JSPS HQ (Headquarter) Office in Tokyo

Address : Kojimachi Business Center Building, 5-3-1, Kojimachi, Chiyoda-ku, Tokyo,  
102-0083 Japan  
URL : <https://www.jsps.go.jp/>

### ■ CNRS (Centre National de la Recherche Scientifique)

Name : Ms. Caroline DANILOVIC  
Direction Europe de la recherche et coopération internationale  
Japon - Corée - Taïwan  
Tel : +33 (0)1 44 96 53 36  
E-mail : [caroline.danilovic@cnrs-dir.fr](mailto:caroline.danilovic@cnrs-dir.fr)  
URL Official Top Page: <https://www.cnrs.fr/fr>  
For international: <https://international.cnrs.fr/en/>

### ■ Inserm (Institut National de la Santé et de la Recherche Médicale)

Name : Ms. Maria Eugenia Le Gourriérec  
Département des Partenariats et des Relations Extérieures (DPRE)  
E-mail : [maria-eugenia.le-gourrierec@inserm.fr](mailto:maria-eugenia.le-gourrierec@inserm.fr)  
URL : <https://www.inserm.fr/>

### ■ MEAE–MESR (Ministère de l'Europe et des Affaires Etrangères - Ministère de l'Enseignement supérieur et de la Recherche)

Name : Ms. Coraline GILLARD  
Chargée de mission pour la Science et la Technologie  
Service pour la Science et la Technologie (SST), Ambassade de France  
Tel : +81 (0)3 5798 6041  
E-mail : [phc-sakura.tokyo-amba@diplomatie.gouv.fr](mailto:phc-sakura.tokyo-amba@diplomatie.gouv.fr)  
URL : <https://www.campusfrance.org/fr/sakura>

### ■ ANR (Agence Nationale de la Recherche)

Names : Ms. Maria Tsilioni, Pr. Valérie FROMENTIN  
Department Social Sciences and Humanities  
E-mail : [Maria.TSILIONI@agencerecherche.fr](mailto:Maria.TSILIONI@agencerecherche.fr), [Valerie.FROMENTIN@agencerecherche.fr](mailto:Valerie.FROMENTIN@agencerecherche.fr)  
URL : <https://anr.fr/fr/>

### ■ CNR (Consiglio Nazionale delle Ricerche)

Name : Dr. Francesca Argenio  
External Relations Coordinator Asia and Africa  
International Relations Unit  
E-mail : [francesca.argenio@cnr.it](mailto:francesca.argenio@cnr.it)  
URL : <https://www.cnr.it/it/relazioni-internazionali>

### ■ MUR (Ministero dell'Università e della Ricerca)

Name : Mrs. Yasmine Iollo  
Direzione Generale dell'internazionalizzazione e della comunicazione  
Ufficio III - Internazionalizzazione della ricerca  
E-mail : [yasmine.iollo@est.mur.gov.it](mailto:yasmine.iollo@est.mur.gov.it), [dgintco.ufficio3@mur.gov.it](mailto:dgintco.ufficio3@mur.gov.it)  
URL : <https://www.mur.gov.it/it>  
<http://www.ricercainternazionale.miur.it/>



JAPAN SOCIETY FOR THE PROMOTION OF SCIENCE

日本学術振興会



**JSPS** STRASBOURG  
OFFICE

## JSPS Strasbourg Office

42a, avenue de la Forêt Noire  
67000 Strasbourg, France

[jsps@unistra.fr](mailto:jsps@unistra.fr)

<https://jsps-strasbourg.com/>

